



TEST REPORT
ON
0.6 TO 1.3 GHz
SINGLE POLE THREE THROW
NON-REFLECTIVE / ABSORPTIVE SWITCH MODULE

AMC MODEL No:
SWN-1140-3DT-STANDARD
OPTION SHL, HPR4W, HS30NS

Serial Numbers: 3MS208164 THRU 3MS208166

DESIGNED
BY
R. Afable

TESTED
BY
R. Afable

REPORTED
BY
E. Elder

October 26, 2004

JRH
RJR
PW
RD
ES.
SKM
JDT
LC

AMERICAN MICROWAVE CORPORATION., 7311-G Grove Road, Frederick, MD 21704
Tel: 301-662-4700 • Fax: 301-662-4938 • Email: sales@americanmicrowavecorp.com
Website: <http://www.americanmicrowavecorp.com>

ISO9001 : 2000 CERTIFIED

TABLE OF CONTENTS

●	PRODUCT DESCRIPTION AND ELECTRICAL SPECIFICATIONS	PAGE 3
●	PRODUCT FEATURE AND ENVIRONMENTAL SPECIFICATIONS	PAGE 4
●	OUTLINE DRAWING	PAGE 5
●	FUNCTIONAL SCHEMATIC	PAGE 6
●	TEST DATA ON SWN-1140-3DT-STANDARD OPTIONS SHL, HPR4W, HS30NS SERIAL NUMBERS 3MS208164 THRU 3MS208166	PAGE 7
●	TEST DATA FOR SWN-1140-3DT-STANDARD OPTION SHL, HPR4W, HS30NS SERIAL NUMBER 3MS208164	PAGE 8
●	TEST DATA FOR SWN-1140-3DT-STANDARD OPTION SHL, HPR4W, HS30NS SERIAL NUMBER 3MS208165	PAGE 9
●	TEST DATA FOR SWN-1140-3DT-STANDARD OPTION SHL, HPR4W, HS30NS SERIAL NUMBER 3MS208166	PAGE 10

**SINGLE POLE THREE THROW
NON-REFLECTIVE / ABSORPTIVE SWITCH MODULE
AMC MODEL No:
SWN-1140-3DT-STANDARD OPT SHL, HPR4W, HS30NS**

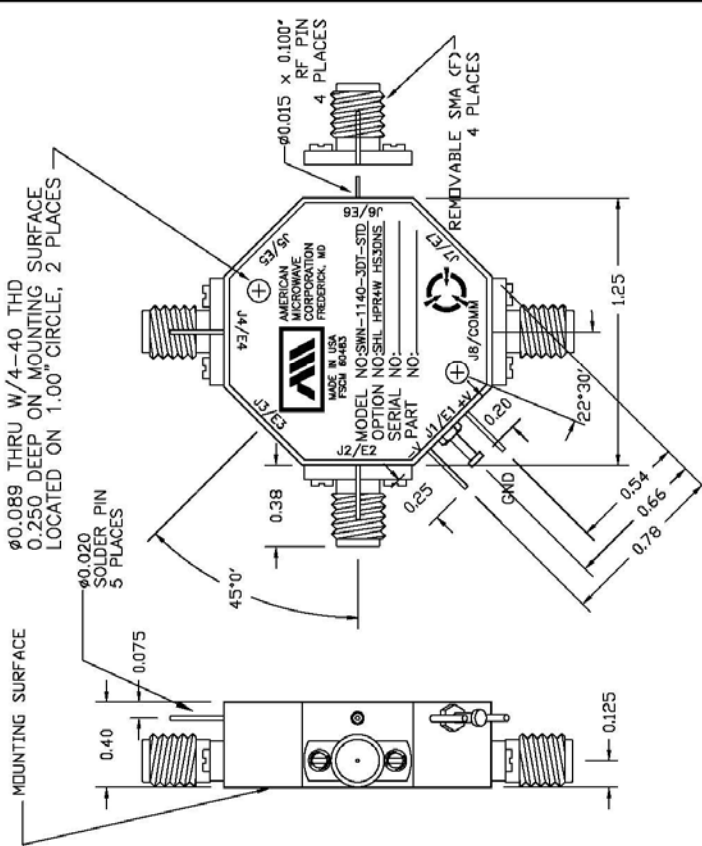
FEATURES:

- **0.6 TO 1.3 GHz FREQUENCY RANGE**
- **LOW INSERTION LOSS**
- **HIGH SPEED**
- **HIGH POWER CAPABILITIES**

SPECIFICATIONS:

- **FREQUENCY** : 0.6 TO 1.3 GHz
- **INSERTION LOSS** : 1.5 dB MAXIMUM
- **ISOLATION** : 70 dB
- **VSWR** : 1.5:1
- **SPEED** : DELAY ON: 30 nS
: DELAY OFF: 30 nS
- **RF POWER** : 4 WATTS
- **CONTROL** : TTL LOGIC "0"=ON, "1"=OFF
- **POWER SUPPLY** : +5V @ 150 mA MAXIMUM
: -5V @ 100 mA MAXIMUM
- **SIZE** : 1.25" (L) x 1.25" (W) x 0.40" (H)
- **WEIGHT** : 2.0 OZ

PRODUCT FEATURE

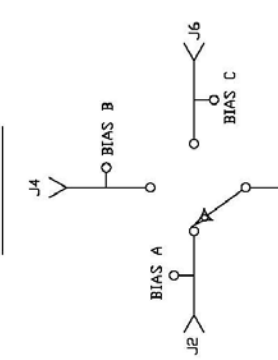
ZONE REV. 1 DESCRIPTION ORIGINAL RELEASE DATE 05/08/04 APPROVED	 <p> 0.089 THRU W/4-40 THD 0.250 DEEP ON MOUNTING SURFACE LOCATED ON 1.00" CIRCLE, 2 PLACES </p> <p> 0.020 SOLDER PIN 5 PLACES </p> <p> 0.015 x 0.100" RF PIN 4 PLACES </p> <p> REMOVABLE SMA (F) 4 PLACES </p> <p> 0.38 0.25 0.20 0.54 0.66 0.78 1.25 45° 22°30' </p> <p> MODEL NO. SWN-1140-3DT-STD OPTION NO. SHL HPR4W HS30NS SERIAL NO. PART NO. </p> <p> AMERICAN MICROWAVE CORPORATION FREDERICK, MD MADE IN THE USA FROM BOARD </p>	CONTRACT NO. AMERICAN MICROWAVE CORPORATION FREDERICK, MARYLAND
DESCRIPTION MIC MODEL SWN-1140-3DT-STANDARD OPTION: SHL, HPR4W, HS30NS IS A SINGLE PORT, PIN, PULL-UP/ABSORPTIVE SWITCH MODULE WITH LOW INSERTION LOSS, HIGH SPEED AND INTEGRAL TTL DRIVER, DESIGNED FOR HIGH POWER FROM 600 MHz TO 1.3 GHz.	SPECIFICATIONS: • FREQUENCY: 0.6 GHz TO 1.3 GHz • INSERTION LOSS: ABSORPTIVE: 1.5 dB MAXIMUM SOLATION: 70 dB • VSWR: ABSORPTIVE IN/OUT: 1.5:1 ABSORPTIVE OUT/OFF: 1.5:1 • SPEED: DELAY ON: 30ns DELAY OFF: 30ns • RF POWER: 4 WATTS • CONTROL: TTL LOGIC "0"=ON "1"=OFF • POWER SUPPLY: +5V @ 150 mA MAX. -15V @ 100 mA MAX. • SIZE: 1.25" (L) x 1.25" (W) x 0.40" (H) • WEIGHT: 2.0 oz.	TITLE PRODUCT FEATURE SWN-1140-3DT-STANDARD OPTION: SHL, HPR4W, HS30NS RADIAL SOLID STATE SWITCH
APPROVALS DATE 05/08/04	APPROVED DATE 05/08/04	SIZE FROM NO. A 60483 DWG NO. 100-6352 SCALE NYS SHEET 1 OF 3

ALL DIMENSIONS ARE IN INCHES
 TOLERANCES:
 X.XX ±0.020
 X.XXX ±0.010

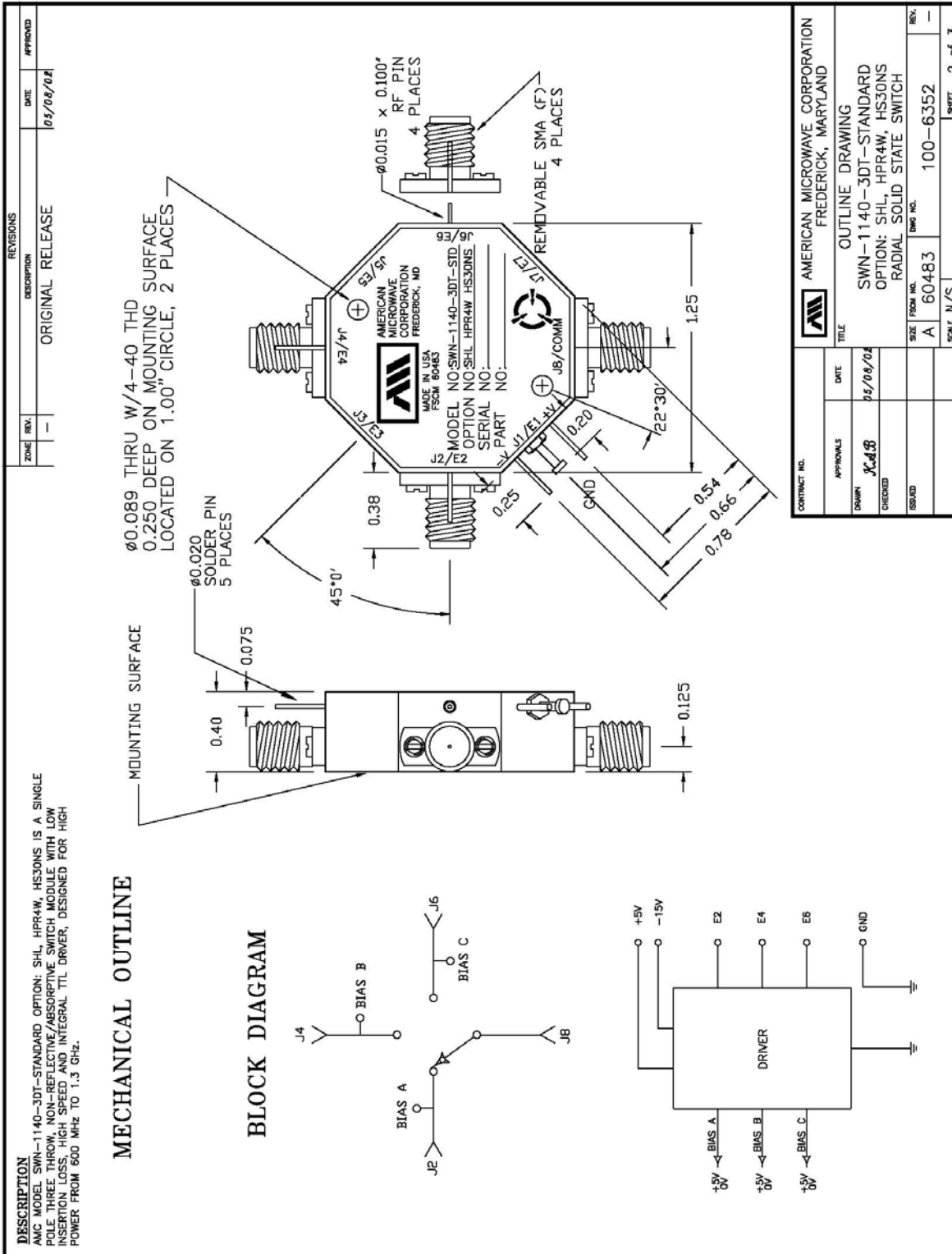
ENVIRONMENTAL RATINGS:
 • TEMPERATURE: -55C TO +85C (OPERATING)
 -65C TO +125C (STORAGE)
 • HUMIDITY: MIL-STD-202F, METHOD 103B COND. B
 • SHOCK: MIL-STD-202F, METHOD 2138 COND. B
 • VIBRATION: MIL-STD-202F, METHOD 204D COND. B
 • ALTITUDE: MIL-STD-202F, METHOD 105C COND. B
 • TEMPERATURE CYCLE: MIL-STD-202F, METHOD 107D COND. A

NOTE: THE ABOVE SPECIFICATIONS ARE SUBJECT TO CHANGE IN REVISION

BLOCK DIAGRAM



OUTLINE DRAWING



FINAL TEST DATA

FINAL TEST DATA SHEETS

FOR

AMC MODEL NUMBER

SWN-1140-3DT-STANDARD
OPTION SHL, HPR4W, HS30NS

Serial Numbers:

3MS208164 THRU 3MS208166

